

Milton "Mit" Francis Ness

Milton Francis Ness "Mit" was born January 1, 1933, at home north of Pukwana to Botholf "Tophy" Ness and Hilda (Behrns) Ness. He left home when he was 14 and worked at the Cable Ranch until he was drafted into service and served during the Korean War. His unit built air strips and roads in Korea and Guam. Following the war, he returned to South Dakota and married Baunita Jandreau; four children were born to this union. He ranched on Cedar Creek north of Kennebec until his divorce. The ranch he built is still being run by his sons today. He then ranched north of Marcus with his brother. He married Guyla Edwards in 1985, one child was born to this union.

Mit or Milt was a man who had an affinity with animals especially horses and cattle. He loved to team rope and to watch family and friends rodeo. He was a man with a big heart and a gentle soul. Many children were welcome at his home to stay for however long they needed. Mit believed family was not just those you were related by blood. You could always depend on Mit to lend a hand and help where help was needed. People could always count on a new story or joke whenever he was around. He spent years going to rummage sales with lists of orders from many.

Mit Ness, 88, died February 11, 2021, at Monument Health Senior Care Sturgis where he has spent the last 6 years. Strokes and dementia had taken a toll and he did not visit as much as he once did, but he could still make people laugh and had special bonds with many at the facility. We thank the staff of the nursing home for taking care of him.

Mit is survived by his wife, Guyla; daughter, Katie; sons, Larry Ness, Bart Ness (Tonya); 7 grandchildren: Layne Larson (Ryan) and children, Trig and Reese; Elliot Gourneau (Caitlin) and daughter, Ivy; Maycee Ness, Brody Ness, Kalder Ness, Dara Ness and Bridgir Ness; brother, Bernard Ness; and sisters, Judy (Carl) Knuppe and Bonnie (Donnie) Hackens; sister-in-law, Patricia Henderson (Craig); father-in-law, Guy Edwards, Jr.; as well as numerous nieces and nephews. Survivors also include all those who are considered family including Ben Janis, Jim Jandreau, and their families.

He was preceded in death by his parents; brothers, Marvin and Rodney Ness; and two children who died in infancy.

Memorials have been established First Presbyterian Church of Sturgis, to Sturgis Kiwanis Food Pantry, or to Mark Park (info at <https://www.facebook.com/pg/TheMarkPark/about>).

Condolences may be sent to the family at www.kinkadefunerals.com.

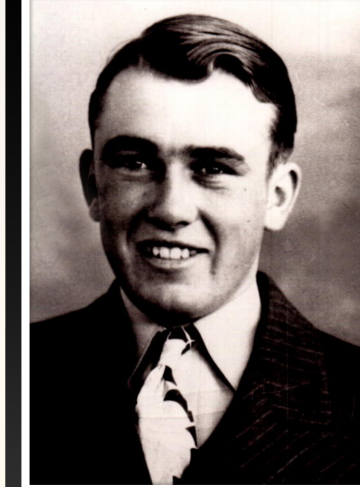
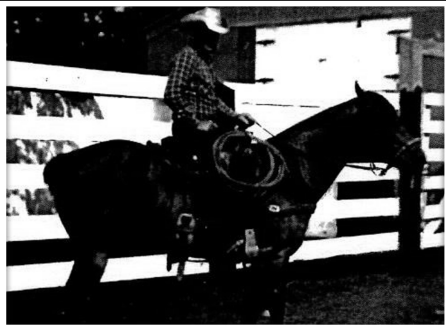
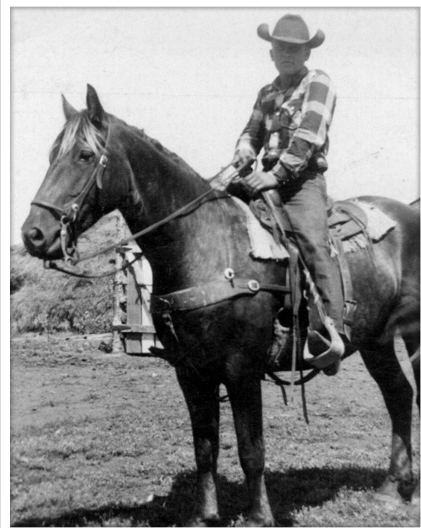
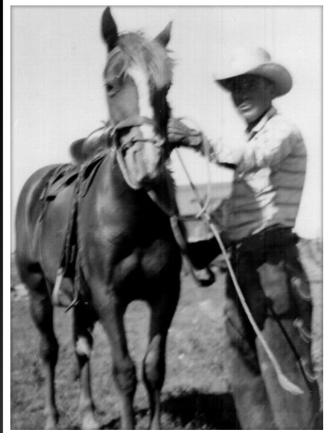
We thank you for your presence and condolences.



In Loving Memory

Milton "Mit" Francis Ness

January 1, 1933 ~ February 11, 2021



In Memory Of
Milton "Mit" Francis Ness

Date of Birth

January 1, 1933

Pukwana, South Dakota

Date of Death

February 11, 2021

Sturgis, South Dakota

Service

Wednesday, February 17, 2021, at 10:00 a.m.

First Presbyterian Church

Sturgis, South Dakota

Clergy

Pastor Paul Henschen

Musician

Brenda Schaffer

Song

"Precious Lord, Take My Hand"

Military Honors

Spearfish Veterans Honor Guard

Spearfish, South Dakota

Final Resting Place

Black Hills National Cemetery

Sturgis, South Dakota

A man stood at the heavenly gate

His face was scarred and old

He stood before the man of fate

For admission to the fold

What have you done Saint Peter asked,

To gain admission here?

I've been a cowboy sir he said for many, many a year

The pearly gates swung open wide

Saint Peter struck the bell

Come in and choose your harp he said,

You've had your share of hell!