

Glen Ernest Wahlfeldt

Glen Ernest Wahlfeldt was born October 16, 1921, at Newell to Henry John Augustus and Anna (Babb) Wahlfeldt. He grew up on the family ranch near Twilight and attended the Trail Creek country school through the 8th grade. His father gave him the choice of attending high school or herding sheep. Glen chose sheep. As a 13 year old, he started in the sheep business. First herding, then shearing, and finally running his own ranch.

He met the love of his life at a country dance. On November 12, 1943, he married LaVonne Symonds at Broadus, MT. The couple made their home on the ranch where Glen was a member of the Butte County Commissioners, president of the SD Woolgrowers/ Sheepgrowers, and served on the Predator Board. He was also a member of the Sampont Township Board, Scottish Rite, Shrine and the Masonic Lodge. He also learned to fly in the 50's and owned several planes.

In 1997, they sold the ranch and moved to Newell where Glen enjoyed fishing with his buddies, gardening, and hunting. Glen hunted in Canada, Idaho, Colorado, Wyoming, and Montana, as well as South Dakota. He killed his last elk at the age of 85.

Glen, 89, Newell, died Thursday, October 6, 2011, at his residence in Newell.

Survivors include his sons, Wes (Sandi) Wahlfeldt, Belle Fourche, and Bill (Pam) Wahlfeldt, Sturgis; daughters, Bobbi (Baine Maupin) Wahlfeldt, Buffalo, and Roxie (Jack) Huston, Sturgis; sisters, Leona Eckles, Lincoln, NE, and Ruth McDermott, Rapid City; 8 grandchildren; 18 great-grandchildren; and 4 great-great-grandchildren.

He was preceded in death by his wife, LaVonne; daughter, Sharon Maynard; three brothers, Alvin, Donald, and Louis; and one sister, Esther.

Memorials have been established to the Newell Ambulance, Newell Fire Department, and the Mud Butte Fire Department.

Condolences may be sent to the family at www.kinkadefunerals.com.

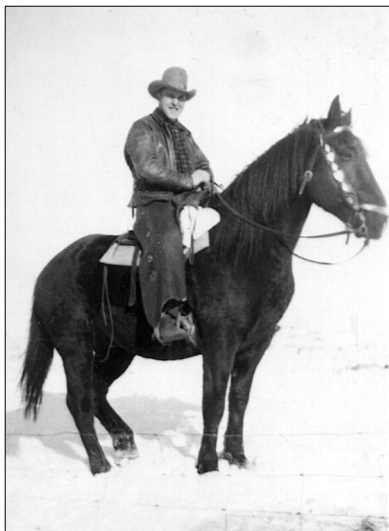
*The family invites everyone to a time of fellowship and lunch
at the Sturgis Vet's Club immediately following the funeral service.
We thank you for your presence and condolences.*

In Loving Memory Of



Glen Wahlfeldt

1921 ~ 2011



***A Cowboy's Prayer
By Badger Clark***

*Oh Lord, I've never lived
where churches grow.
I've loved creation better as it stood
That day You finished it, so long ago
And looked upon Your work
and called it good.
I know that others find You in the light
That's sifted down
through tinted window panes,
And yet I seem to feel You near tonight
In this dim, quiet starlight on the plains.*

*I thank You, Lord, that I'm placed so well,
That You have made my freedom so complete;
That I'm no slave to whistle, clock or bell,
Nor weak-eyed prisoner of wall and street.
Just let me live my life as I've begun
And give me work that's open to the sky;
Make me a pardner of the wind and sun,
And I won't ask a life that's soft or high.

Let me be easy on the man that's down;
Let me be square and generous with all.
I'm careless sometimes, Lord, when I'm in town,
But never let 'em say I'm mean or small!
Make me as big and open as the plains,
As honest as the hawse between my knees,
Clean as the wind that blows behind the rains,
Free as the hawk that circles down the breeze!

Forgive me, Lord, if sometimes I forget,
You know about the reasons that are hid,
You understand the things that gall and fret,
You know me better than my mother did.
Just keep an eye on all that's done and said
And right me sometimes when I turn aside,
And guide me on the long, dim trail ahead
That stretches upward toward the Great Divide.*

In Loving Memory Of

Glen Ernest Wahlfeldt

Born

October 16, 1921
Newell, South Dakota

Died

October 6, 2011
Newell, South Dakota

Funeral Service

Wednesday, October 12, 2011, at 10:00 a.m.
First Presbyterian Church

Officiating

Rev. Denzel Nonhof

Special Music

Vonda Mahaffy

Musical Selections

"Amazing Grace"
"Silver Haired Daddy Of Mine"
"Grampa"

Pallbearers

Harold Miller ~ Jim Smeenk ~ Bob Orwick
Fred Lamphere ~ Greg Smeenk ~ Jim Justice

Honorary Pallbearers

All Neighbors, Friends,
And the Table Of Knowledge